



Phone: 07 8787709
Mobile: 0210355692
Email: admin@centennialpark.school.nz

PĀANUI

Te Wahanga tua tahi mo te wiki Tuaiwa
Tokohia ngā tamariki: 72



21st September 2021

Kia ora e te whaanau,

Thank you to those whaanau who have talked to us about your internet needs. This is for whaanau who do not have very good access. We will be working with the MOE to support those with internet needs. We are still following this through and are yet to contact some whaanau.

The questions we are asking are:

If you do not have good internet coverage?

Let us know...

If you need help or support with the online learning program? Let us know...

Contact the kura either by email or a phone call. Many thanks.

Keeping up to date with the current Covid situation throughout NZ is important. We can then make informed decisions for our kura that will directly affects us. The latest case at the tip of the Waikato region has been tracked well but it can certainly upset a community very quickly. Please make sure you are using the contact tracing QR codes.

As we prepare for the next learning challenge, we need our whaanau to keep in touch with us. If you have changed your phone number or address, please let the office know.

Communication is vital because if a crisis occurs, we can keep you informed. We ask that our whaanau download the Skool Loop app onto your phones if you haven't already.

One more week next week left in the term. It has been extremely draining and challenging for everyone. Keep safe whaanau and please make sure you spend some quality fun time with tamariki now that the weather is warming up.

Heoi ano

Kevin Ikin, Principal

Upcoming Events this Term & next

BOT Mtg 5:15pm

Last day of Term 3

Start of Term 4

22nd Sept

Fri 1st Oct

Mon 18th Oct

Nau mai haere mai.

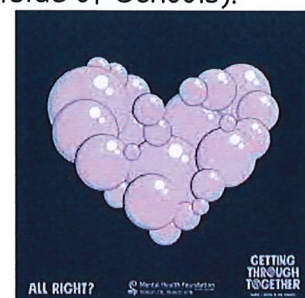
*A warm welcome to our new students
and whanau with more starting in Term 4
We want all our tamariki to enjoy their
time learning and being challenged to
strive for excellence*

Keeping ourselves as safe as possible

Thank you for working with us here at the kura to ensure we are keeping our distance and calling into the school office if you need things either dropped off or picked up. It is important that when you are on the school site that you use the QR code, wear a face mask and sign in on the register. As most of you either drop off or pick up tamariki and wait in your car or near the gateway, there is no need to use the QR code, only if coming onto the kura grounds and into the office area.

Thank you whaanau.

We will continue to encourage regular washing with soap and water or using hand sanitizer. Keeping to the social distance rules and wearing face masks when in a public indoor location (outside of Schools).



Centennial Park School Values Ngā Uara



Mana Tangata - Pride in their identity, resilience when faced with challenges and adversity, enduring respect and care for hapū and iwi, integrity of character and as an individual

Panekiretanga - (Excellence) in all they apply themselves to

Wairua Hihiko - (Innovation) their creativity, imagination and flair for innovation

Maniapototanga - versed in the whakapapa, waiata, karakia, histories of Maniapoto

Community Notices

LEGENDZ 3910

Afterschool Care Program: This has now started and run at the kura in one of the classrooms. There are limited numbers of students. If you are interested in enquiring, please contact Hailey James on 0224549883 or email: Legendz3910@outlook.com

Make the most of a great opportunity

This is open to our whanau

Learn how to use 'moka' for weaving on

Monday's & Tuesday's

Whaea Hana and Whaea Helen (our nannies) are available from 10am -2pm and anytime in between here at the kura

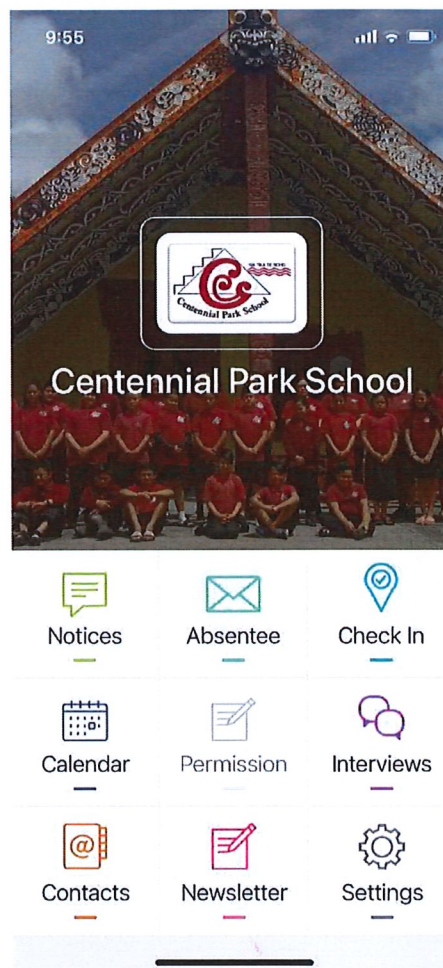


They look forward to seeing you there.

Every Tuesday and Wednesday afternoon,
we have our tamariki learning from our
nannies.



FREE Download Skool Loop app



Golden rules for Alert Level 2

- Everyone can return to work and school.
- Use the NZ COVID Tracer app to scan in everywhere you go, and have Bluetooth tracing turned on.
- Wear a face covering when you go out and about.
- If you have cold or flu symptoms, isolate immediately and call Healthline for advice about a test.
- Get vaccinated.
- Physical distance 2m from others in public.
- Gatherings can have up to 50 people indoors and 100 people outdoors.



Centennial Park School

Thanks to the below businesses for sponsoring our school app:



PATEL'S
MINI MARKET

11 TE KUITI RD,
TE KUITI



Electrical
Laser

Te Kuiti



NEW WORLD Te Kuiti



If you would like to advertise on the Centennial Park School Skool Loop App please email Content@skoolloop.com



To download our app: In Google Play & App Store search 'Skool Loop' & choose Centennial Park School once installed.

TOY EXPO 2021

These school holidays: 1 October - 17 October

Where: Smarty Pants, 56 Te Kumi Road, Te Kuiti

- ✓ FREE Make your own tie dye t-shirt
No registrations required... on every weekday between 10am-3pm
- ✓ FREE Make your own Halloween mask
- ✓ FREE lawn games
- ✓ FREE giveaways and more...

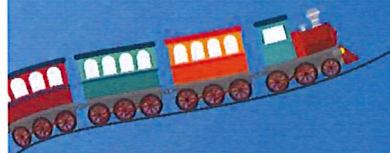
A responsible parent/ guardian must be with children at all times



Have you downloaded our school app yet?



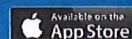
Our school app ensures excellent and reliable communication between our school and parents at all times!



Full Speed Ahead!

Helpful Features:

- Parent-teacher interviews
- Push-notifications
- Absentee reporting
- Notices
- Calendar
- Permission slips
- Newsletters
- Contact tracing
- School contacts



New Zealand Sign Language (NZSL)

Come and join the 8 week NZSL course with your NZSL qualified tutor Kelly.

This course will introduce to you basic NZSL grammar and structure and Deaf Culture in a supportive learning focused environment. You will learn how to converse in NZSL using the correct body language and facial expressions. With tips to face tutor time, this course is perfect for anyone looking to immerse themselves in this beautiful language. You will be provided with resources to further your skills.

Please note: Sometimes there may be a change in class. For extra resources to make up for a holiday day or other cancellations due to the number of participants the course will continue on the 16th of October due to the number of participants. You will be notified of any changes in advance.

Refresher Courses and Invoices can be made available for schools or workplaces on request.

8 WEEK COURSE DETAILS

Beginner Level 1A
Thursdays 6.30-8.30pm
21st October to 9th December

The beginner's course is suitable for those with no prior knowledge of New Zealand Sign Language and Deaf Culture. Topic is about Meeting and Greeting Our Class and Needs/Wants.

Cambridge High,
29 Sweeney Rd, Cambridge

COST \$125 per person
Limited space (up to 15 people)

COURSE INCLUDES

- Course Outline
- Handouts
- Completion Certificate
- Tea and coffee

8 WEEK COURSE DETAILS

Beginner Level 1B
Mondays 6.30-8.30pm
16th October to 13th December

This course is for those who have already completed Beginner Level 1A with certificates. Topic is about Family/Friends and Everyday Activities.

Hamilton North School,
Warwick Ave, Hamilton

COST \$125 per person
Limited space (up to 15 people)

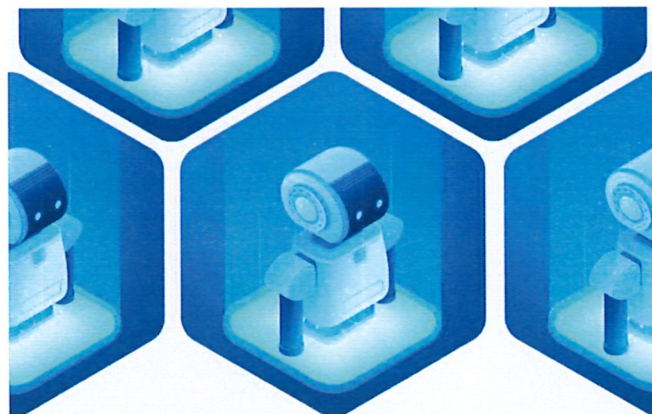
COURSE INCLUDES

- Course Outline
- Handouts
- Completion Certificate
- Tea and coffee



USIGN
NZ SIGN LANGUAGE

For more information and to enrol please contact
kelly@usign.co.nz or txt only 0275 377 779



CREATION STATION

Join us every Wednesday afternoon at 3.30pm during the school terms to learn great new fun technology and other cool things

This is a free programme for ages 8-100+



Waitomo District Library



Miniball News

Alert Level 2 At Waitomo Miniball 2021

- 1. Please sign the register or use the QR Code**
The coaches can bring there team straight in and tick off their players on the scoresheet.
(This will be the players Covid19 Register)
- 2. Adults please remember your face mask**
- 3. The main doors are for entrance only into the Stadium**
- 4. The doors on the opposite side of the court are for exit only**
- 5. Teams will only be allowed to enter when the previous teams have left the stadium**
- 6. Teams and their spectators are required to leave the stadium as soon as their game has finished**
- 7. There is a maximum of 50 people allowed into the stadium at one time, we ask that spectators are kept to a minimum.**
- 8. If you or your child are sick, please go home.**
- 9. Referee's / committee members will ensure all other covid regulations are upheld such as sanitation of equipment.**
- 10. No unregistered players will be permitted to play unless notice given to committee prior to 3pm on the game day.**

NOTE: The maximum of 100 are now allowed into the stadium after yesterday's announcement,

Miniball Rules

Senior Miniball Rules

- Basic basketball rules apply if not mentioned below.
- Games will be 12 minutes each half with 1 minute halftime.
- Seniors will play with a size 6 ball.
- The games commence with a 'Jump Ball', but for the rest of the game possession will be determined by directional play – this means possession will alternate. The scorebench will manage this. An arrow will be displayed from the scorebench indicating who will get the next possession.
- Seniors play man-to-man defence. NO ZONE ALLOWED.
- A Grade only will play full court defence. A-Reserve and B grade will play three-quarter court defence. The defensive team must retreat back to the free-throw line extended.
- Back court rule applies for seniors.
- Rolling subs are allowed at a maximum of 2 at a time.
- Only five fouls allowed per player per game. If a player has five fouls they must leave the court and are no longer allowed to play in the game.
- If a team reaches 8 fouls per half, the opposing team will get 1 point and possession for non-shooting fouls and 1 point and no possession for shooting fouls. Team fouls reset to zero at half time.
- If an attacking player is fouled, in the act of shooting from within the keyhole area, then 1 point will be automatically awarded.
- 3 second rule applies. This means that an offensive player is not allowed to remain in the keyhole while on offence for longer than 3 seconds at a time. Once an offensive player has left the keyhole then they are allowed to re-enter and the 3 second count starts again. If a shot is made then the 3 second count also stops. This rule is at the discretion of the referee and may be given more leniencies at the beginning of the competition.
- No time outs are permitted.
- All players must be in uniform to take the court. Seniors must have numbered tops. (This may be waived only for grading weeks). No long sleeves to be worn or shorts below the knee.
- The game must start with at least four registered players.
- The game is defaulted if a team is not on court ready to play 5 minutes after the start of the game, or unregistered players take the court.

Miniball Rules

Intermediate Miniball Rules

- Basic basketball rules apply if not mentioned below.
- Games will be 12 minutes each half with 1 minute halftime.
- Intermediates play with a size 5 ball.
- The games commence with a 'Jump Ball', but for the rest of the game possession will be determined by directional play – this means possession will alternate. The scorebench will manage this. An arrow will be displayed from the scorebench indicating who will get the next possession.
- Intermediates will play with the coloured armbands. Game bands are provided.
- Coloured bands are to be worn on the wrist of each player on court. Players are only allowed to defend opposing player with the same colour bands. The breaking of this rule results in the attacking team taking the ball at the side, unless it would disadvantage the attacking team to do so. Changing of bands on court is not allowed.
- If an attacking player is blocked or interfered with in the act of shooting from within the keyhole area, by an opposition player wearing a **different** coloured band, then 1 point will be automatically awarded. If the goal was scored regardless, then 2 points will be awarded as usual. This does not apply to seniors.
- A Grade only will play three-quarter court defence. The defensive team must retreat back to the free-throw line extended. A-Reserve and B Grades will play half court defence - the defensive team must retreat back to halfway on defence.
- Back court rule does not apply.
- Rolling subs are allowed at a maximum of 2 at a time.
- When a foul is called on a player this player is subbed off automatically and is to leave the court for a short amount of time. The fouler can be replaced by another member of the team. If there is no available sub, then the fouler must stay off the court for 20 seconds.
- If an attacking player is fouled, in the act of shooting from within the keyhole area, then 1 point will be automatically awarded.
- Referee will call fouls but they are not to be recorded on a scoresheet.
- 3 second rule applies. This means that an offensive player is not allowed to remain in the keyhole while on offence for longer than 3 seconds at a time. Once an offensive player has left the keyhole then they are allowed to re-enter and the 3 second count starts again. If a shot is made then the 3 second count also stops. This rule is at the discretion of the referee and may be given more leniencies at the beginning of the competition.
- No time outs are permitted.
- All players must be in uniform to take the court. (This may be waived only for grading weeks). No long sleeves to be worn or shorts below the knee. No numbered tops are required for this grade.
- The game must start with at least four registered players.
- The game is defaulted if a team is not on court ready to play 5 minutes after the start of the game, or if unregistered players take the court.

Sports

Teenaa koutou e te iwi! Tonight kicks-off the starting of the Waitomo Miniball season.

BE AT YOUR GAMES 20 MINUTES BEFORE - YOU WILL NEED TO GET CHANGED INTO UNIFORMS
(The changing rooms are inside the stadium which will be locked in between each game played)

As we move into Miniball please make the best decision for you and your whaanau and know your kura is behind you. For those that are still keeping safe just know we have your tamaiti ready to join back in when you are ready.

Miniball Draw - CP Intermediates & Senions

TEAM KĀREAREA (Seniors)

DRAW: TUE, 21st Sep - Team Karearea vs Kiokio Lakers @ 6.30pm
Wed. 22nd Sep - Team Karearea vs Wharekura @ 7.00pm
Jaiziah - Jacob - Tarquin - Stacey - Lawson - Anahera Te Moananui Davis -
Tuhanea - James - Ngahirapu - Colenzo
TRAINING: Tuesday & Wednesday Lunch-Time
GAME DAY: Tuesdays & Wednesdays

TEAM KŌKAKO (Seniors)

DRAW: TUE, 21st Sep - Team Kokako vs Waitomo @ 7.00pm
Wed, 22nd Sep - Team Kokako vs Pukenui Black @ 4.00pm
Khalei - Kansas - Daniel - Rayden - Malikye - Hunter -
Jazay - Lucy - Kiana - Saint Claire
TRAINING: Tuesday & Wednesday Lunch - Time
GAME DAY: Tuesday & Wednesday

TEAM TUI (Intermediates)

DRAW: FRI, 24th Sep - Team Tui vs Otewa @ 4.00pm
FRI, 24th Sep - Team Tui vs Wharekura @ 5.00pm
Tamai - Watea - League - Miriama - Zatalia - Amaia - Nivayah -
Matatu - Eli - Lester - Memphis-Jaxin
TRAINING: Thursday & Friday Lunch-Time
GAME DAY: Friday